

|        |                          |
|--------|--------------------------|
| Title  | SK920LR-IF board ver2.0a |
| Date   | 2017/12/24               |
| Author | Skyley Networks Inc      |
| Detail | SK920LR-IF board 端子情報    |

| CN1        |          |
|------------|----------|
| Pin Number | Pin Name |
| 1          | GND      |
| 2          | N.C      |
| 3          | N.C      |
| 4          | RXD      |
| 5          | TXD      |
| 6          | N.C      |
| 7          | RST      |
| 8          | N.C      |
| 9          | GND      |

| CN2        |          |
|------------|----------|
| Pin Number | Pin Name |
| 1          | GND      |
| 2          | N.C      |
| 3          | N.C      |
| 4          | VDD      |
| 5          | VDD      |
| 6          | N.C      |
| 7          | N.C      |
| 8          | N.C      |
| 9          | GND      |

| CN3        |          |
|------------|----------|
| Pin Number | Pin Name |
| 1          | GND      |
| 2          | RFVCC    |
| 3          | N.C      |
| 4          | N.C      |
| 5          | N.C      |
| 6          | N.C      |
| 7          | N.C      |
| 8          | TXD      |
| 9          | RXD      |
| 10         | N.C      |
| 11         | N.C      |
| 12         | N.C      |
| 13         | VCC      |

| CN4        |          |
|------------|----------|
| Pin Number | Pin Name |
| 1          | GND      |
| 2          | N.C      |
| 3          | RST      |
| 4          | N.C      |
| 5          | N.C      |
| 6          | N.C      |
| 7          | TEST0    |
| 8          | TEST1    |
| 9          | N.C      |
| 10         | N.C      |
| 11         | CLKIN    |
| 12         | N.C      |
| 13         | N.C      |

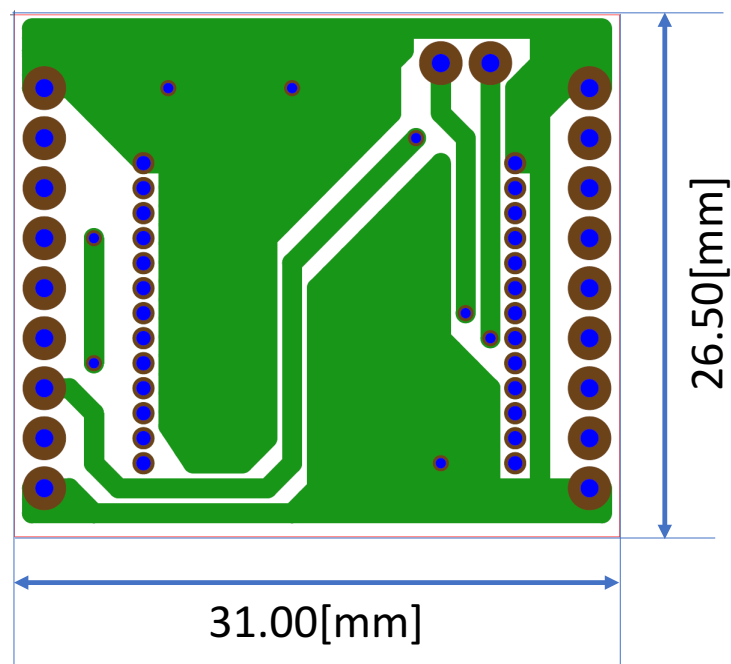
| CN5        |          |
|------------|----------|
| Pin Number | Pin Name |
| 1          | TEST0    |
| 2          | TEST1    |

|        |                          |
|--------|--------------------------|
| Title  | SK920LR-IF board ver2.0a |
| Date   | 2017/12/24               |
| Author | Skyley Networks Inc      |
| Detail | SK920LR-IF board 部品表     |

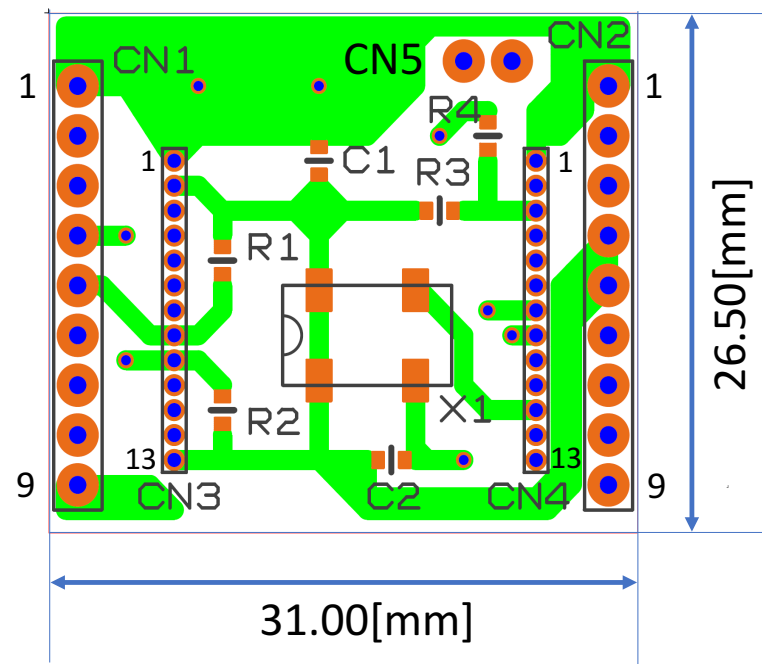
| Reference | Value   |
|-----------|---|
| CN1       | 9x1 2.54mm pitch pin header                           |
| CN2       | 9x1 2.54mm pitch pin header                           |
| CN3       | 13x1 1.27mm pitch pin socket                          |
| CN4       | 13x1 1.27mm pitch pin socket                          |
| CN5       | 1x2 2.54mm pitch pin header(Optional)                 |
| R1        | R_0603 1608size 10k[ohm] chip resistor                |
| R2        | R_0603 1608size 10k[ohm] chip resistor                |
| R3        | R_0603 1608size 0[ohm] chip resistor                  |
| R4        | R_0603 1608size 0[ohm] chip resistor(Optional:R3と 排他) |
| C1        | C_0603 1608size 0.1[uF] chip capacitor                |
| C2        | C_0603 1608size 0.1[uF] chip capacitor                |
| X1        | EPSON SG-3030JC crystal oscillator                    |

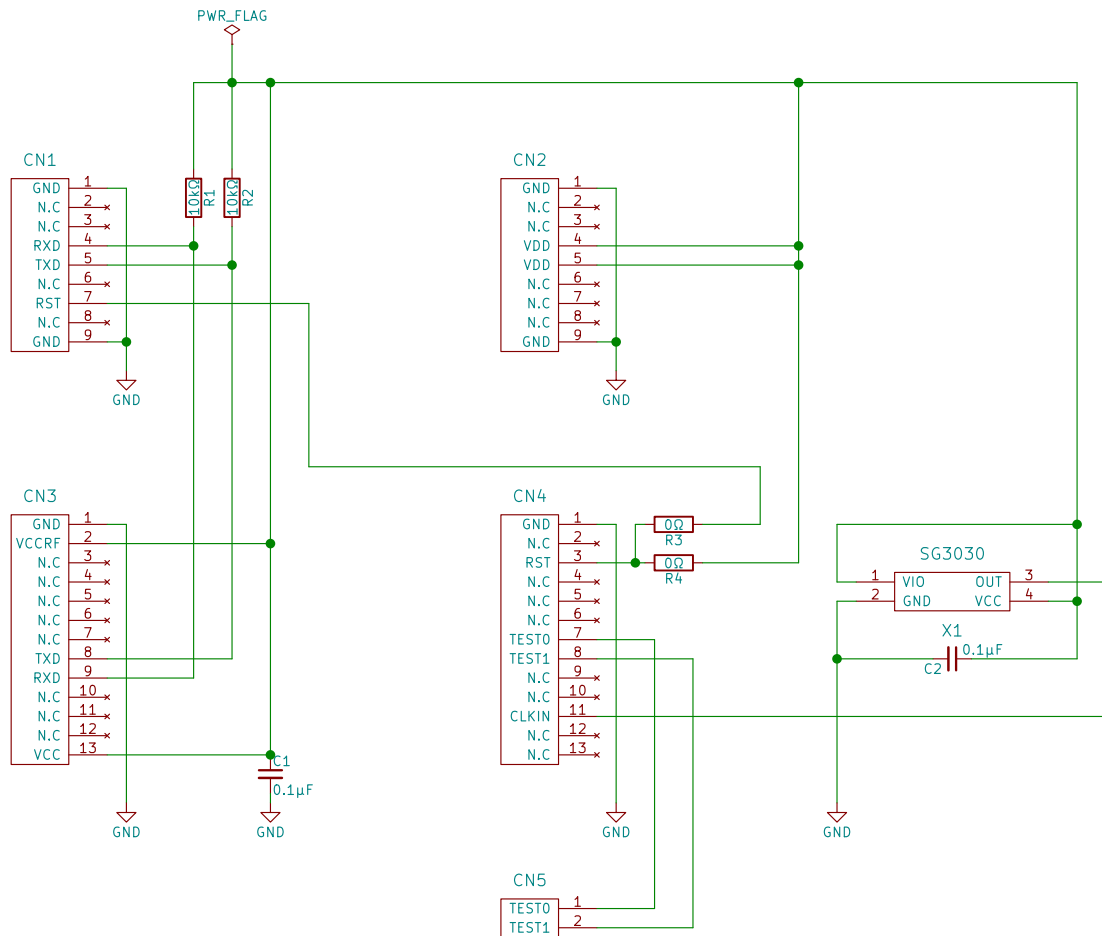
|        |                          |
|--------|--------------------------|
| Title  | SK920LR-IF board ver2.0a |
| Date   | 2017/12/24               |
| Author | Skyley Networks Inc      |
| Detail | SK920LR-IF board 基板レイアウト |

はんだ面



部品面





Update miss description on Ver2.0(No PCB Change)

**Skyley Networks Inc**

Sheet: /

File: SK920LR-IF Board.sch

**Title: SK920LR-IF Board**

Size: A4 Date: 2017-12-24

KiCad E.D.A. kicad 4.0.6

**Rev: Ver2.0a**

Id: 1/1

## 修正履歴

| Version | リリース日      | 変更点など   |
|---------|------------|---|
| Ver2.0  | 2017/6/1   | 初回リリース  |
| Ver2.0a | 2017/12/24 | 回路図の記載ミス修正(PCB変更なし)<br>(1) CN3/Pin13変更<br>(2) CN4/Pin13変更 |